



Southern Tablelands Ecosystems Park

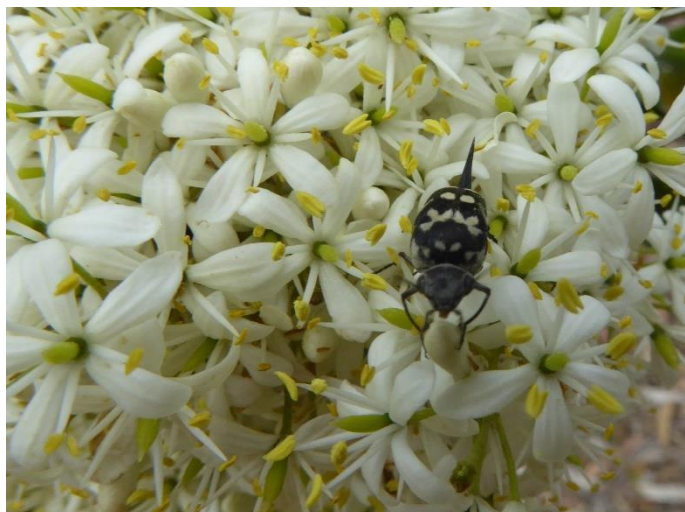
A Regional Botanic Garden for the
Southern Tablelands at Forest 20 at
the National Arboretum Canberra

Of Interest at Forest 20, January 2019



NATIONAL
ARBORETUM
CANBERRA

Number 45 The Best of 2018



January. *Bursaria spinosa*, Sweet Bursaria with
Hoshihananomi leucosticta Tumbling Flower Beetle.



February. *Podolepis jaceoides*, Showy Copper-wire
Daisy & *Laeviscolia frontalis*, Two-spot Hairy Flower
Wasp.



March. *Eucalyptus macrorhyncha*, Red Stringybark &
Thynnus zonatus, Native Flower Wasp.



April. *Pelargonium australe*, Native Pelargonium. A
member of the *Geraniaceae* family. Long flowering.



May. *Junonia villida*, Meadow Argus Butterfly. This is
found Australia wide. Their caterpillars are black and
Spikey.



June. *Platycercus eximius*, Eastern Rosella and
reflection. A common species that often feeds on
grass seed.



July. *Leucochrysum albicans*, Hoary Sunray. A long flowering local daisy. Grows well on gravel surfaces.



October. *Acacia melanoxylon*, Blackwood. A tree of the higher rainfall areas from Queensland to SA.



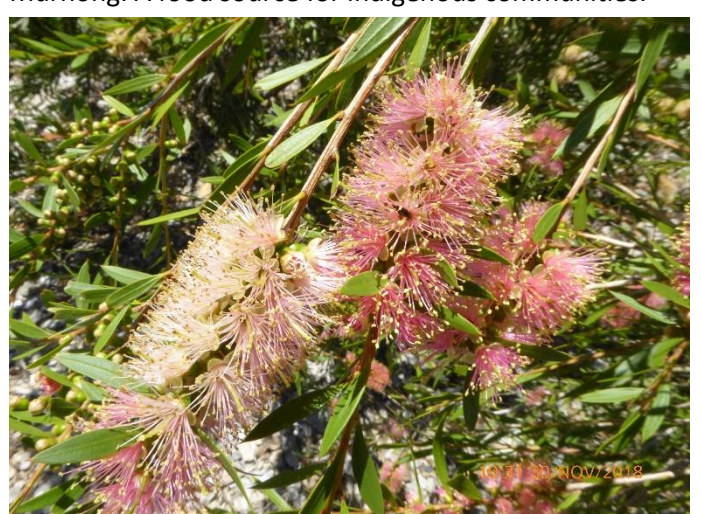
August *Grevillea iaspicula*, Wee Jasper Grevillea. A tall shrub that is endangered in its natural setting.



November. *Microseris walteri* (was lanceolata) Murnong. A food source for indigenous communities.



Mid-September *Acacia buxifolia*, Box-leaf Wattle. A tall shrub. A local wattle with bright golden blossom.



December *Callistemon sieberi* River Bottlebrush. Flowers may be cream, pale yellow or pink as above.

Working bees are held every Thursday morning from 8am, please feel free to join our friendly group at whatever time you can. We break for morning tea at 10 am at the table near our shed. An excellent BYO morning tea is guaranteed. Park on lower section of overflow carpark where you see a group of vehicles.

These photos are a selection from each month photo sheet of 2018 taken by Andy Russell. STEP address PO Box 440, Jamison Centre, ACT 2614.

Merry Christmas to all

Email membership@step.asn.au

Web www.step.asn.au