



Of Interest at Forest 20, August 2020 Number 64



Acacia genistifolia, Early Wattle. A spiny local wattle growing to 2 m. Provides cover for small birds



Hardenbergia violacea, False Sarsaparilla. A well-known woodland species flowering in many locations.



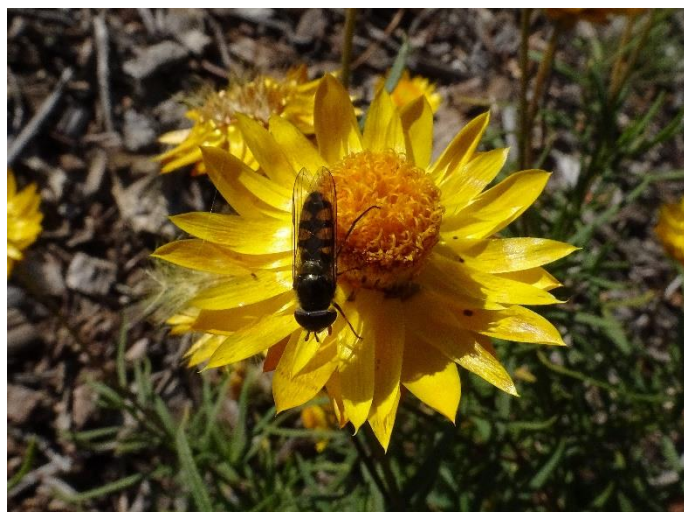
Correa reflexa, Common Correa. A woodland species that has many distinct forms.



Grevillea diminuta, Brindabella Grevillea. A bushy shrub that tends to conceal its flowers.



Leucochrysum albicans , Hoary Sunray with *Melangyna viridiceps*, Common Hoverfly. A long flowering local plant.



Xerochrysum viscosum, Sticky Everlasting and *Melangyna viridiceps* Common Hoverfly. These insects were on a many of our daisy species.



Ammobium alatum, Winged Everlasting again with *Melangyna viridiceps* Common Hoverfly.



Glycine clandestina, Twining Glycine. A fine open twining creeper that is climbing up a tall tree stump.



Coronidium gunnianum, Pale Everlasting. Previously known as *Helichrysum rutidolepis*.



Crowea exalata Ginninderra Falls, Small Crowea. A most attractive long flowering local shrub.



Westringia eremicola, Slender Westringia. A long flowering medium sized shrub with pointed leaves.



Grevillea victoriae Royal Grevillea. A forest grevillea found in the mountains of the south eastern Australia.

While we respect the Coronavirus threat, the STEP working bees are still being held each Thursday from 8am. Car parking will be in the main car park till the new parking area is opened. Parking permits are available for our volunteers. Morning tea is byo and held in the usual place with personal distancing.

These photos were taken by Andy Russell on Friday July 31st, 2020. The postal address for STEP is PO Box 440, Jamison Centre, ACT 2614.

Email membership@step.asn.au

Web www.step.asn.au