

Southern Tablelands Ecosystems Park

A Regional Botanic Garden for the
Southern Tablelands at Forest 20 at
the National Arboretum Canberra

Of Interest at Forest 20, December 2018

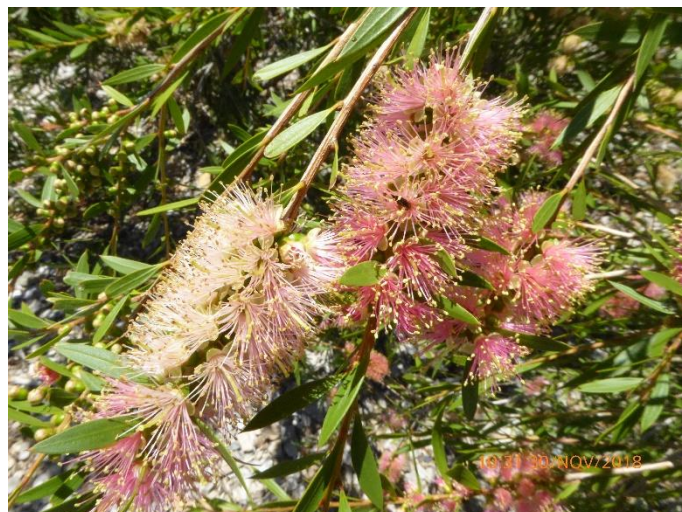


**NATIONAL
ARBORETUM
CANBERRA**

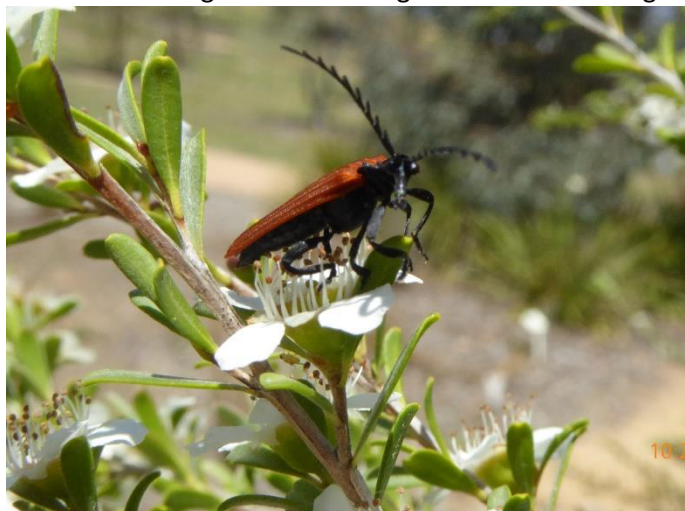
Number 44



Callistemon subulatus, Dwarf Bottlebrush. Not much over a metre high. Worth cutting back after flowering.



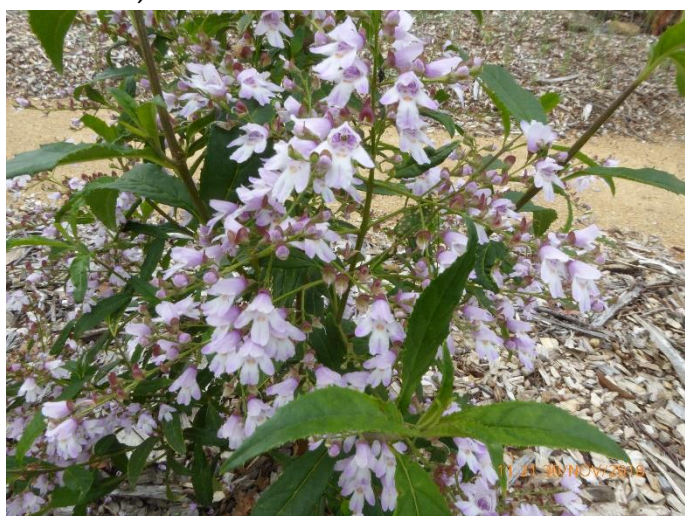
Callistemon sieberi, River bottlebrush. Flowers may be cream, pale yellow and occasionally pink as above.



Porrostoma sp. Lychid Beetle on *Leptospermum obovatum*, Creek Tea-tree. This shrub is in full flower.



Glycine tabacina, Variable Glycine. A scrambler with stoloniferous stems that is planted and a volunteer.



Prostanthera lasianthos, Victorian Christmas Bush. Growing within the Bush Tucker Garden at Forest 20.



Wahlenbergia stricta, Tall Bluebell. A stunning "must see" display again within the Bush Tucker Garden.



Dichopogon fimbriatus, Nodding Chocolate Lily. A tufted erect herb with fibrous roots that end in a tuber.



Acacia mearnsii, Late Green Wattle. Known as an invasive species. A fast-growing tree.



Chrysocephalum semipapposum, Clustered everlasting. A perennial herb putting on a good show.



Isotoma fluviatilis, Swamp Isotome. A prostrate perennial herb that roots from the node.



Cassinia longifolia, Cauliflower Bush. A young plant showing some good flower heads.



Pelargonium australe, Austral Storks-bill. A colourful long flowering herb of the *Geraniaceae* family.

Working bees are held every Thursday morning from 8am, please feel free to join our friendly group at whatever time you can. We break for morning tea at 10 am at the table near our shed. An excellent BYO morning tea is guaranteed. Park on lower section of overflow carpark where you see a group of vehicles.

These photos were taken on Friday 30th of November 2018 by Andy Russell. The postal address for STEP is: PO Box 440, Jamison Centre, ACT 2614.

Email membership@step.asn.au

Web www.step.asn.au