



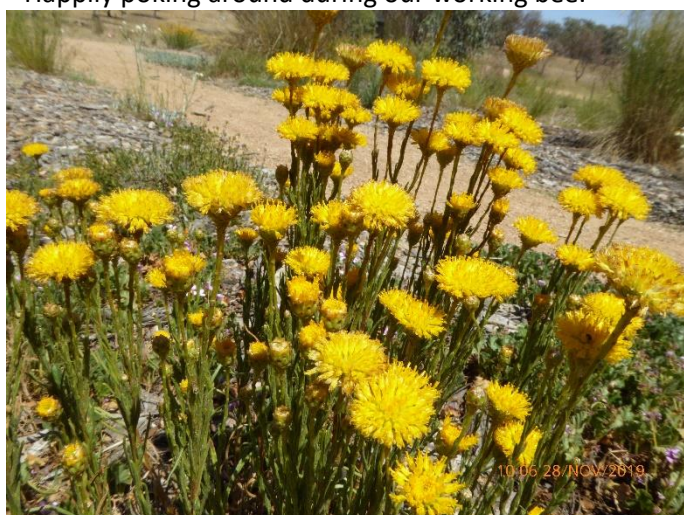
**Southern Tablelands Ecosystems
Park A Regional Botanic Garden for
the Southern Tablelands at Forest 20
at the National Arboretum Canberra**



Of Interest at Forest 20, December 2019



Tachyglossus aculeatus, Short-beaked echidna.
Happily poking around during our working bee.



Rutidosis leptorrhynchoides, Button Wrinklewort. A
daisy species that is listed as endangered in the ACT.

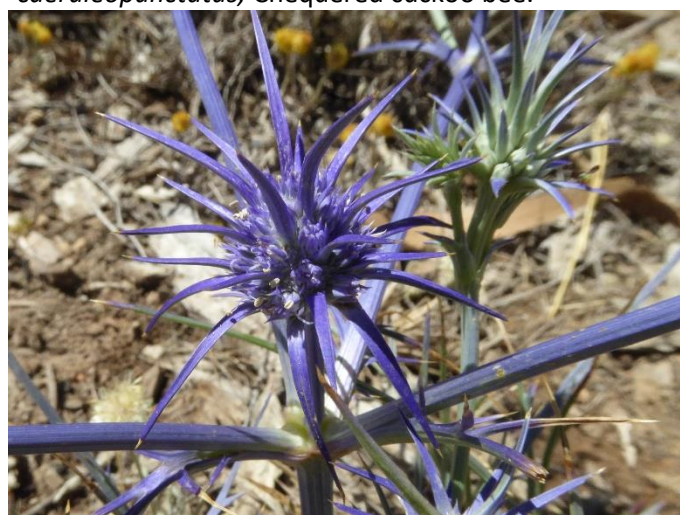


Eucalyptus pauciflora, Snow Gum, *Phyllotocus
rufipennis*, Nectar Scarab and *Neorrhina punctatum*
Spotted flower chafer.

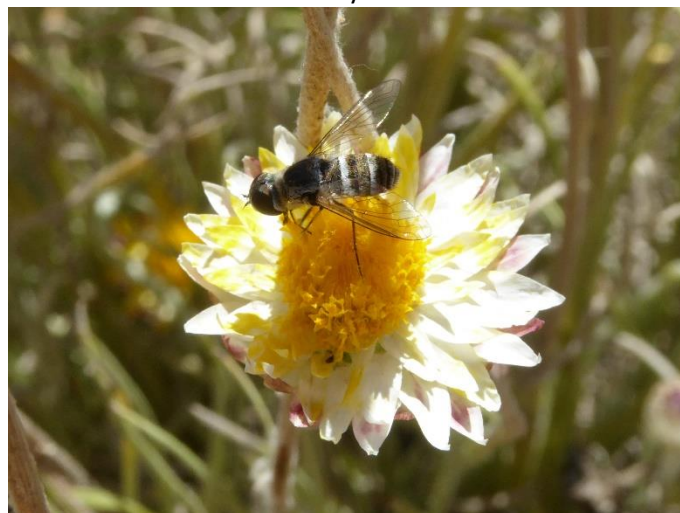
Number 56



Callistemon sieberi, River bottlebrush and *Thyreus
caeruleopunctatus*, Chequered cuckoo bee.



Eryngium ovinum, Blue Devil. A perennial herb that
renews from the base each year.



Leucochrysum albicans, Hoary sunray with *Villa* sp. An
unidentified *Villa* bee fly.



Rytidosperma bipartitum, Leafy wallaby grass. A grass of open eucalypt woodland.



Kunzea ericoides, Burgan. A local species that can grow to become a dense thicket.



Xerochrysum viscosum, Sticky everlasting. A hardy local everlasting daisy. Cut back in early spring.



Chrysocephalum semipapposum, Clustered everlasting. A hardy local everlasting daisy.



Leptospermum continentale, Prickly Tea-tree. A tall shrub of south-eastern Australia cultivated for years.



Podolepis jaceoides, Showy copper-wire daisy. An attractive long-flowering daisy.

Working bees are held every Thursday morning from 8am, feel free to join our friendly group at whatever time you are able. We break for morning tea at 10 am at the table near our shed. An excellent BYO morning tea is guaranteed. Park on grassy overflow car park where a group of cars are seen.

These photos were taken by Andy Russell on Thursday November the 28th this year. The postal address for STEP is PO Box 440, Jamison Centre, ACT 2614.

Email membership@step.asn.au

Web www.step.asn.au