



Southern Tablelands Ecosystems Park

A Regional Botanic Garden for the Southern Tablelands at Forest 20 at the National

Arboretum Canberra



Of Interest at Forest 20, February 2017



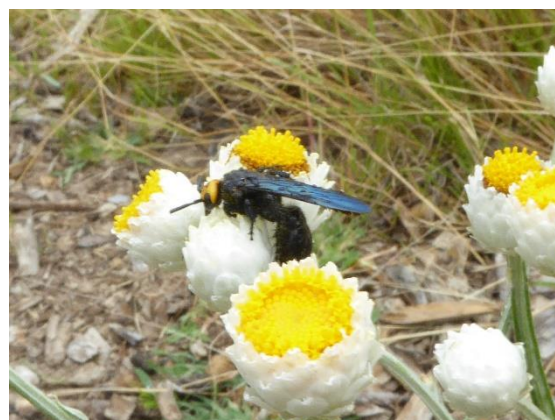
Coronidium gunnianum, Pale Everlasting. A hardy long flowering daisy.



Brachyscome graminea, Grass Daisy. Another perennial daisy.



Calocephalus citreus, Lemon Beauty-heads. Another perennial daisy.



Ammobium alatum, Winged Everlasting with *Scoliidae* sp. a Hairy Flower Wasp.



Calotis glandulosa, Mauve Burr-daisy. A perennial daisy with spiny seed head.



Corvus coronoides, Australian Raven, a regular visitor.



Eryngium ovinum, Blue devil with what may be a potter wasp (yet to be identified).



Eucalyptus macrorhyncha, Red Stringybark with *Aridaeus thoracicus* the Longicorn Beetle



Pelargonium australe, Austral Storks-bill, a small herbaceous plant of the Geraniaceae family.



Dianella longifolia, Smooth Flax Lily, a perennial tufted herb.



Xerochrysum bracteatum, Golden Everlasting, A stunning though short-lived daisy.

Our working bees are held each Thursday morning from 8am, please feel free to join our friendly group at whatever time you can. We break for morning tea at 10 am at the table near our shed. An excellent (byo) morning tea is guaranteed.



From top left, a Hairy Flower Wasp, right a Fiddler Beetle, below Meadow Argus Butterfly, bottom right a yet to be identified wasp.

These photos were taken on the 1st & 2nd of February this year by Andy Russell. Contact STEP: PO Box 440, Jamison Centre, ACT 2614. Email membership@step.asn.au Web www.step.asn.au