



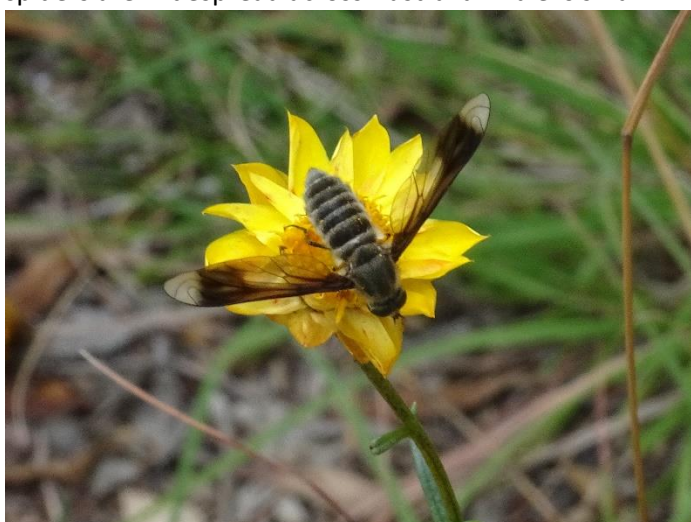
Of Interest at Forest 20, February 2021 Number 70



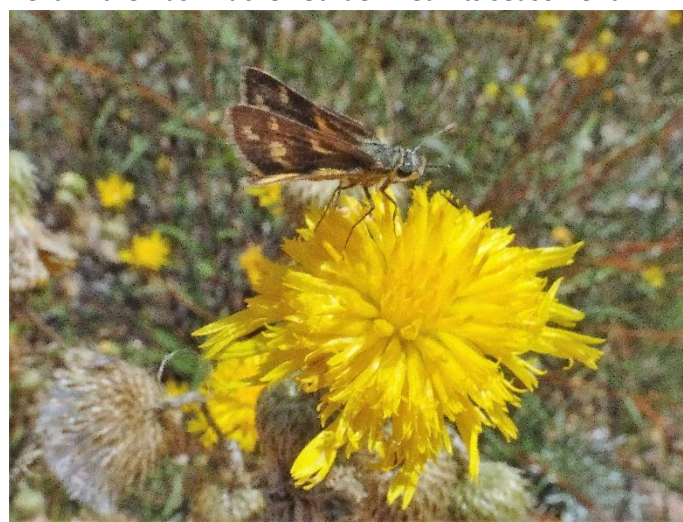
Nephila edulus, Female Golden Orb Spider. These spiders are widespread across Australia. Male is small.



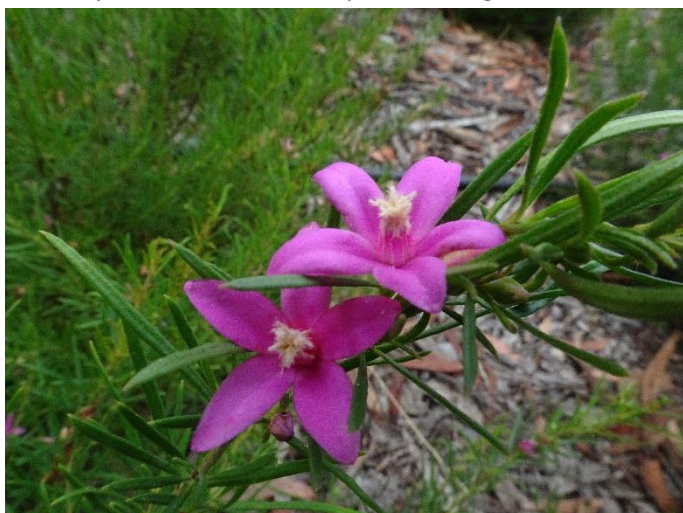
Arthropogon fimbriatum, Chocolate Lily. A tufted herb in the Bush Tucker Garden near its season end.



Comptosia sp, unidentified Comptosia Bee Fly on *Xerochrysum viscosum*, Sticky Everlasting.



Podolepis jaceoides, Showy Copper-wire Daisy with *Ocybadistes walkeri*, Greenish Grass-dart.



Crowea exalata Ginninderra Falls, Small Crowea. A long flowering local small shrub.



Xerochrysum viscosum, Sticky Everlasting with *Utetheisa* sp. A Tiger Moth.



Correa reflexa var. *reflexa*, Common Correa. A variable species sometimes known as Native Fuchsia.



Westringia eremicola, Slender Westringia. Medium sized shrub with slightly prickly leaves. Attracts insects



Brachyscome rigidula, Cut-leaf Daisy. A sprawling wiry daisy with hairy flower stalks. May grow to 40 cm.

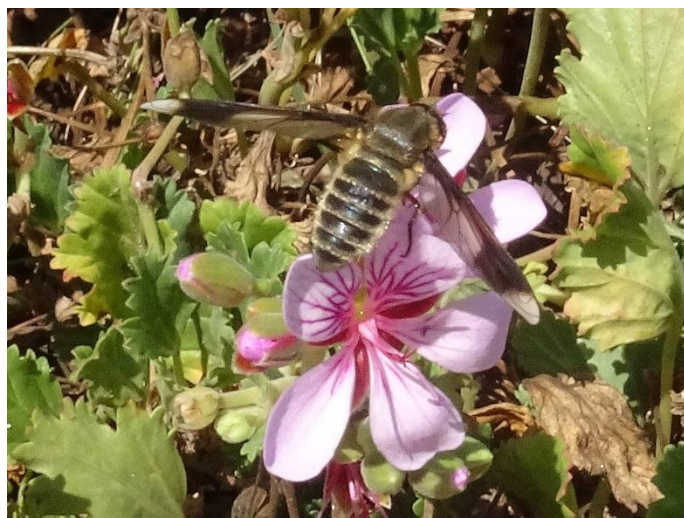
We respect the Coronavirus threat, the STEP working bees are being held each Thursday from 8am. Car parking is in the lowest section of the new parking area where you see a group of cars. Enter by the new concrete ramp. Morning tea is byo and held near our shed. We respect social distancing.



Sporobolus creber, Slender Rat's-tail Grass. One of our newer grass species planted in several locations.



Rytidosperma bipartitum, Ringed Wallaby Grass. A late specimen of this grass where most has hayed off.



Comptosia sp. Unidentified Comptosia Bee Fly on *Pelargonium australe*, Native Pelargonium.

These photos were taken by Andy Russell on Sunday January 31st, 2021. The postal address for STEP is PO Box 440, Jamison Centre, ACT 2614.

Email membership@step.asn.au

Web www.step.asn.au