



Of Interest at Forest 20, June 2020

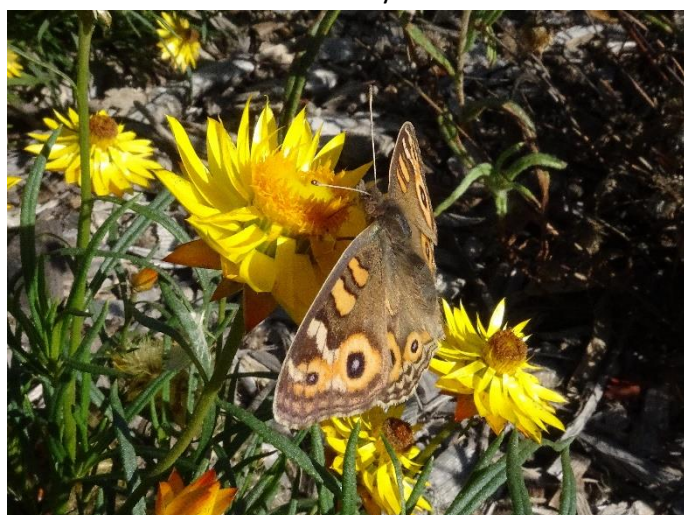
Number 62



Acacia penninervis, Mountain Hickory. A tall shrub that will flower for some time yet.



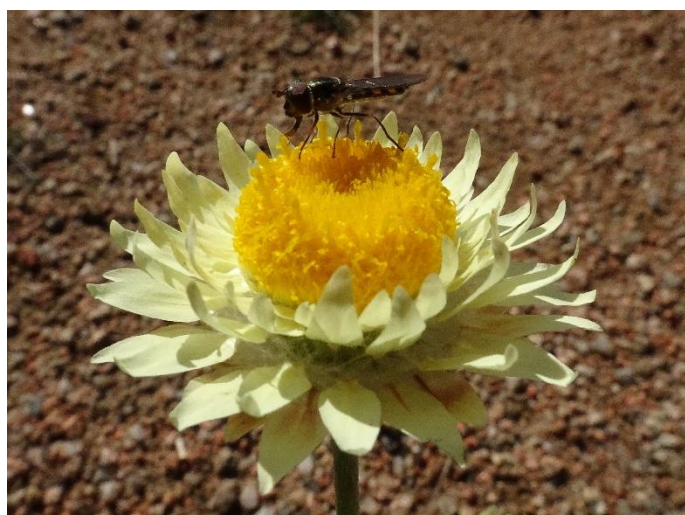
Westringia eremicola, Slender Westringia. A long flowering medium-sized shrub with pointed leaves.



Xerochrysum viscosum, Sticky Everlasting with *Junonia villida*, the Meadow Argus.



Wahlenbergia stricta, Tall Bluebell with a double petalled form, both in the Bush Tucker Garden.



Leucochrysum albicans, Hoary Sunray with *Melangyna viridiceps* a Hoverfly.



Crowea exalata Ginninderra Falls, Small Crowea. A most attractive long flowering local shrub.



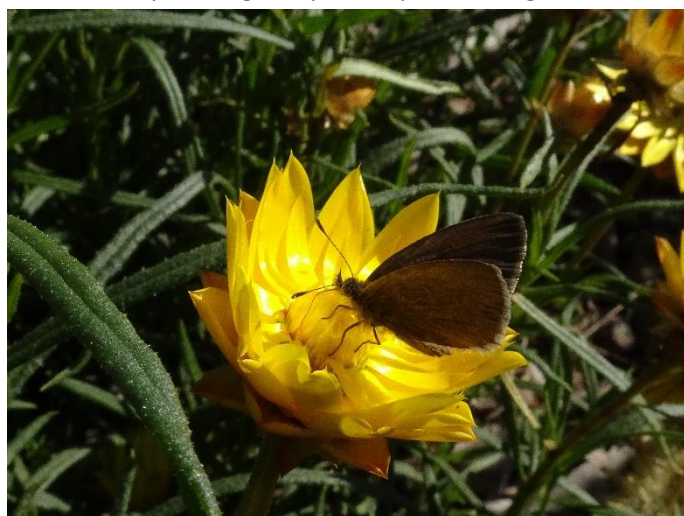
Ammobium alatum, Winged Everlasting. A perennial daisy that reseeds readily. Can be considered weedy.



Brachyscome rigidula, Hairy Cutleaf Daisy. A somewhat sprawling daisy with sparse foliage.



Linum marginale, Native Flax. A short-lived perennial that seems to reseed readily.



Xerochrysum viscosum, Sticky Everlasting with *Zizina otis*, Lessor Grass Blue.



Calotis glandulosa, Mauve Burr-daisy. A perennial burr-daisy with spiny seed capsules.



Junonia villida, Meadow Argus (butterfly) on *Podolepis jaceoides* Showy Copper-wire Daisy with *Xerochrysum viscosum*, Sticky Everlasting in background.

With the impact of the Coronavirus STEP working bees are curtailed but have not ceased. With the approval of the National Arboretum Canberra our volunteers work over a seven-day basis so there are fewer volunteers present at any one time.

These photos were taken by Andy Russell on Saturday May 30th 2020. The postal address for STEP is PO Box 440, Jamison Centre, ACT 2614.

Email membership@step.asn.au

Web www.step.asn.au