



A Southern Tablelands Regional Botanic
Garden at Forest 20, National
Arboretum Canberra

Of Interest at Forest 20, March 2022

Number 82



Pelargonium australe Native Pelargonium. This species is a great survivor of the wet conditions



Brachyscome rigidula Cut-leaf Daisy. A sprawling wiry perennial daisy with attractive mauve flowers.



Goodenia ovata Hop Goodenia. A rounded shrub that responds well to pruning. Shown for a second month.



Eucalyptus macrorhyncha Red Stringybark. A young tree with a lot of blossom.



Solanum linearifolium Mountain Kangaroo Apple. A tall woody shrub that readily self-seeds



Wahlenbergia stricta Tall Bluebell with an unidentified insect.



Orgyia anartoides Hairy Apple Moth caterpillar on *Acacia buxifolia* Box-leaved Wattle.



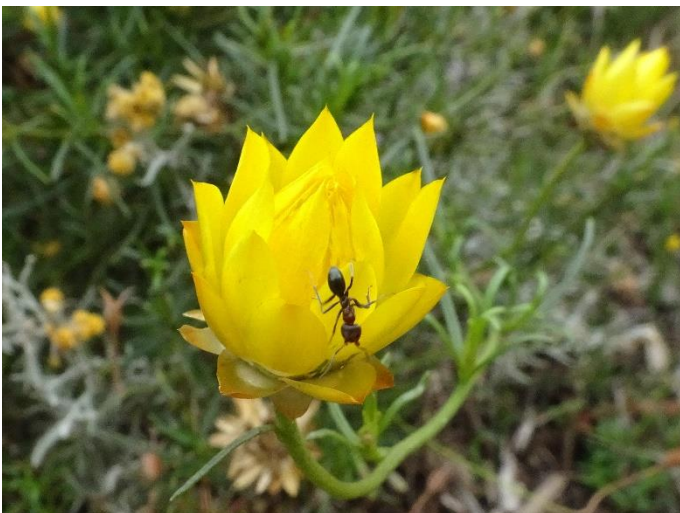
Nephilia edulis Golden Orb-weaving Spider. On a web strung between a post and a tea-tree plant.



Bulbine bulbosa Bulbine Lily. An attractive species that has fragrant flowers. A useful plant for rockeries.



Ammobium alatum Winged Everlasting. A perennial daisy that self-seeds readily. Often considered weedy



Xerochrysum viscosum Sticky Everlasting with a Meat Ant *Iridomyrmex purpurea*.



Araneus hamiltoni Hamilton's Orb Weaver on *Ammobium alatum* Winged Everlasting.

While Forest 20 has been closed to visitors due to damage to our path system, our working bees are continuing each Thursday morning. Morning tea (byo) is at 10am at the tables neat the shed

These photos were taken by Andy Russell on Monday February 28th , 2022. The postal address for STEP is PO Box 440, Jamison Centre, ACT 2614.

Email membership@step.asn.au

Web www.step.asn.au