



Southern Tablelands Regional
Botanic Garden at Forest 20,
National Arboretum Canberra.

Of Interest at Forest 20 March 2024
Number 106



Laeviscolia frontalis, Two-spot Hairy Flower Wasp
on *Podolepis jacioides* Showy Copper-wire Daisy.



Lasioglossum (Chilalictus) lanarium Halictid Bee
on *Podolepis jaceoides* Showy Copper Wire Daisy.



Pelargonium sp. *Striatellum* Omeo Storksbill. A yet
to be formally named endangered species.



Xerochrysum viscosum Sticky Everlasting with
some *Iridomyrmex purpureus* Meat Ants.



Geranium potentilloides. Cinquefoil Cranesbill. A
prostrate perennial herb with a thick taproot.



Bulbine glauca Rock Lily. Presumably self-sown as
it is trying to compete with exotic grass species.



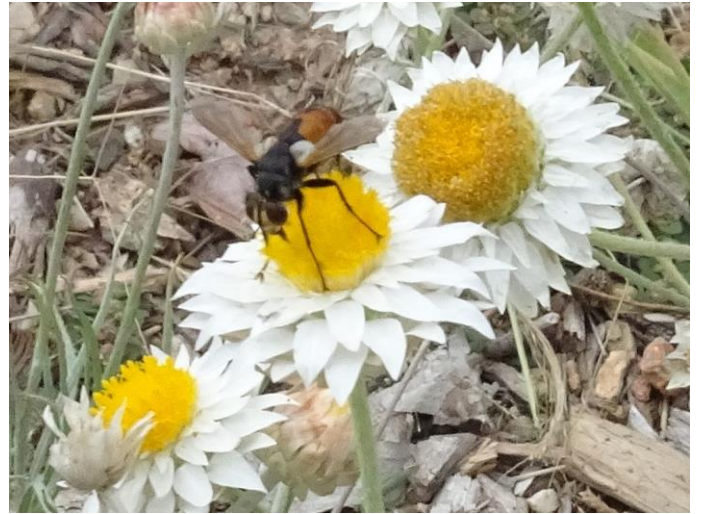
Utetheisa pulcheloides Heliotrope Moth on
Ranunculus papulentus Large River Buttercup.



Pultenaea spinosa Spiny Bush-pea. An erect shrub to 2 m but which can also be prostrate.



Swainsona galegifolia Smooth Darling Pea. A long flowering perennial pea. Worth a place in a garden.



Leucochrysum albicans Hoary Sunray with a yet to be identified fly.



Crowea exalata Ginninderra Falls. An attractive long-flowering local species.



Goodenia pinnatifida Cut-leaf Goodenia. A widespread species in the ACT according to Canberra Nature Map.

Our working bees are held each Thursday morning from 8am. Morning tea (byo) is at 10am at the tables near the shed. Tools are supplied. New volunteers are welcome, just turn up and make yourself known.

These photos were taken by Andy Russell on Thursday February 29, 2024. The postal address for STEP is PO Box 440, Jamison Centre, ACT 2614. Email secretary@step.asn.au Web www.step.asn.au