



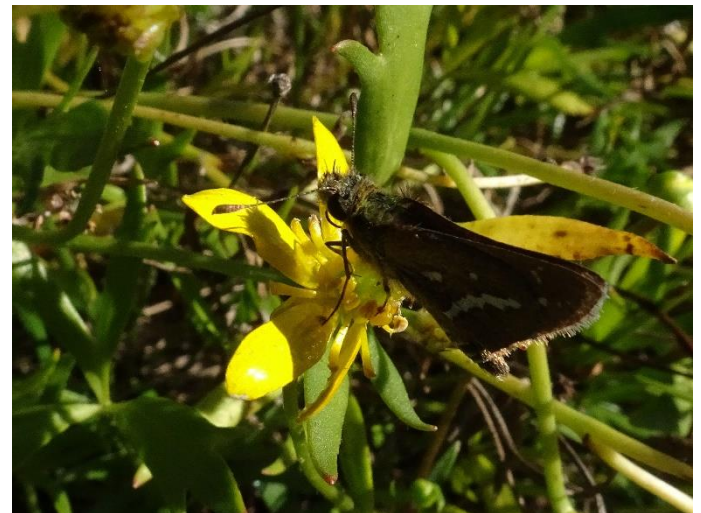
A Southern Tablelands Regional Botanic  
Garden at Forest 20, National  
Arboretum Canberra

Of Interest at Forest 20, May 2022

Number 84



*Podolepis jaceoides* Showy Copper-wire Daisy. . An attractive long-flowering perennial daisy



*Taractrocera papyria* White-banded Grass-dart. On *Ranunculus papulentus* Large River Buttercup.



*Ammobium alatum* Winged Everlasting with *Dasybasis* sp, a March Fly.



*Wahlenbergia stricta* Tall Bluebell. Flowering in the Bush Tucker Garden.



*Pelargonium australe* Native Pelargonium. A great survivor of the wet conditions. Has flowered for 6 months.



*Coronidium gunnianum* Pale Everlasting. This perennial daisy species spreads by rhizomes and by seed.





*Chrysocephalum semipapposum* Clustered Everlasting. Most unusual to be flowering now.



*Pelargonium sp Striatellum* Omeo Storksbill. A yet to be formally described endangered species.



*Gymnopilus junonius* Spectacular Rustgill. This was growing at the foot of *Eucalyptus nortonii*. Photo Ross



*Goodenia ovata* Hop Goodenia. A rounded shrub that responds well to pruning. May need some frost care.



*Melangyna viridiceps* Common Hoverfly on *Brachyscome rigidula* Cut-leaf Daisy.



*Goodenia pinnatifida* Cut-leaf Goodenia. Canberra Nature Map shows this to be widespread in the ACT.

While Forest 20 has been closed to visitors due to damage to our path system, our working bees are continuing each Thursday morning. Morning tea (byo) is at 10am at the tables near the shed

These photos were taken by Andy Russell on Tuesday May 3<sup>rd</sup>, 2022 except the fungi. The postal address for STEP is PO Box 440, Jamison Centre, ACT 2614.

Email [membership@step.asn.au](mailto:membership@step.asn.au)

Web [www.step.asn.au](http://www.step.asn.au)