



**Southern Tablelands Ecosystems
Park** A Regional Botanic Garden for
the Southern Tablelands at Forest 20
at the National Arboretum Canberra



Of Interest at Forest 20, November 2019



Dodonaea viscosa var. *angustifolia*, Narrow-leaved
Hop Bush. This shrub has attractive winged capsules.



Velleia paradoxa, Spurred Velleia. A perennial herb of
the Goodeniaceae family.



Calotis scabiosifolia var. *integrifolia*, Rough Burr-daisy.
A perennial herb that is rare to uncommon.

Number 55



Linum marginale, Native Flax. A short-lived perennial
that seems to reseed easily.



Ranunculus amphitrichus, Small River Buttercup. A
perennial plant found mostly in damp areas.



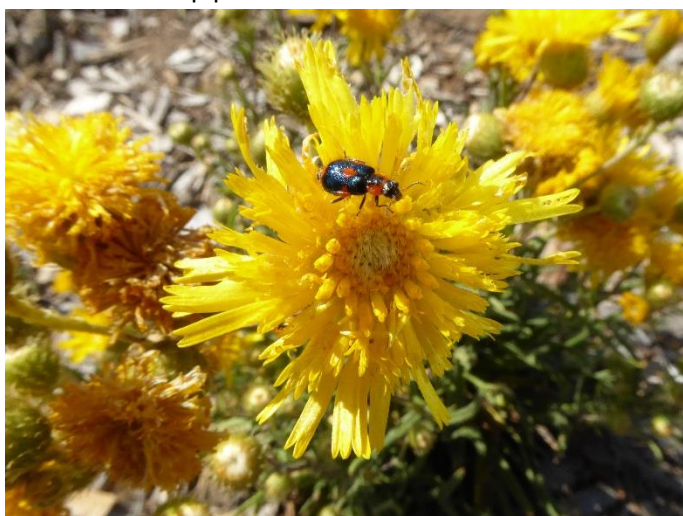
Leucochrysum albicans, Hoary Sunray. A perennial
daisy that is long flowering. Grows well on gravel.



Hakea microcarpa, Small-fruited Hakea. A woody shrub with sharp pointed leaves.



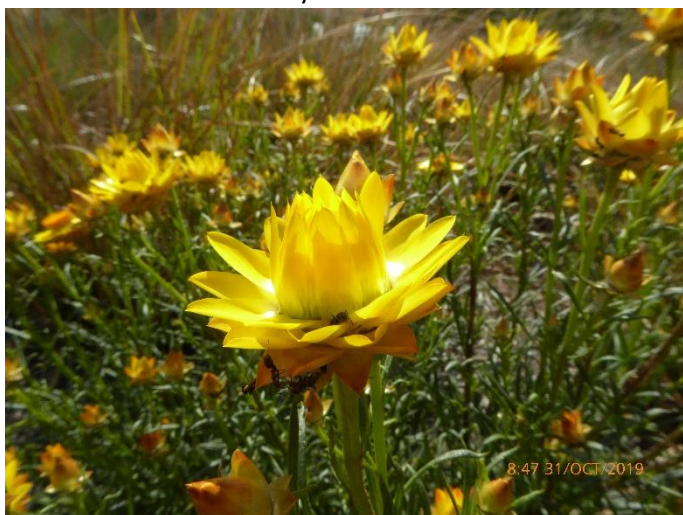
Calotis glandulosa, Mauve Burr-daisy. A perennial daisy with spiny seed capsules. Endangered in NSW.



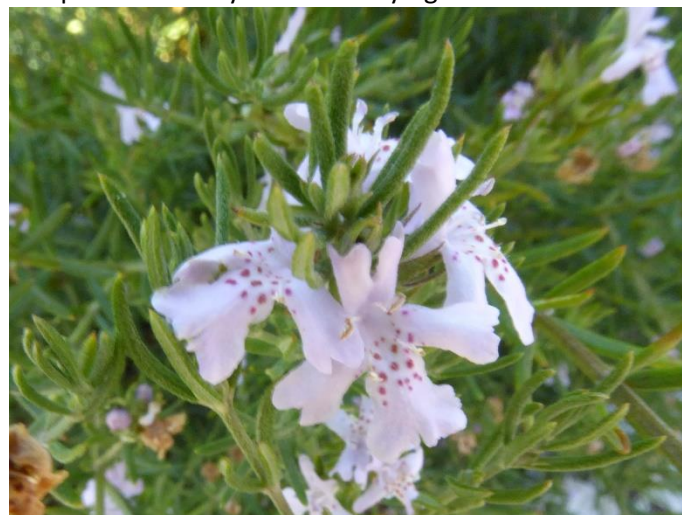
Podolepis jaceoides, Showy Copper-wire Daisy with *Dicranolaius villosus* Melyrid Flower Beetle.



Chrysocephalum apiculatum, Common Everlasting. A low perennial daisy that has varying leaf forms.



Xerochrysum viscosum, Sticky Everlasting. A hardy perennial local daisy. Cut back old growth in spring.



Westringia eremicola, Slender Westringia. A medium sized shrub with sharp pointed leaves.

Working bees are held every Thursday morning from 8am, feel free to join our friendly group at whatever time you are able. We break for morning tea at 10 am at the table near our shed. An excellent BYO morning tea is guaranteed. Park on grassy overflow car park where a group of cars are seen.

These photos were taken by Andy Russell on Thursday October the 31st this year. The postal address for STEP is PO Box 440, Jamison Centre, ACT 2614.

Email membership@step.asn.au

Web www.step.asn.au